

GROUP 0.000

ENGINE - CLUTCH

ILLUSTRATION INDEX

Description	Illust. No.
1975-76 ENGINE IDENTIFICATION	A
1966-71 6 CYL. ENGINE CRANKCASE AND PARTS	1
1966-71 6 CYL. HEAD, ROCKER ARMS AND COVER	2
1965 V-TYPE CRANKCASE AND PARTS (TYPICAL OF 1964-68)	3
1965 V-TYPE CYLINDER HEAD, ROCKER ARMS AND COVER (TYPICAL OF 1964-71)	4
1969 ENGINE AND TRANSMISSION MOUNTING (TYPICAL OF 1970-72)	5
1969-74 V-8 ENGINE ASSEMBLY DETAILS	6 - 7
1976 6 CYL. ENGINE HEAD, MANIFOLD AND RELATED PARTS	8 - 9
1976 6 CYL. ENGINE BLOCK AND RELATED PARTS	10 - 11
1971-74 INTAKE MANIFOLD VACUUM FITTINGS AND SWITCHES	12
1964-72 CLUTCH CONTROL AND LINKAGES	13 - 17
1971-75 FLYWHEEL AND CLUTCH DETAILS	18
1973-76 CLUTCH LINKAGES	19 - 20

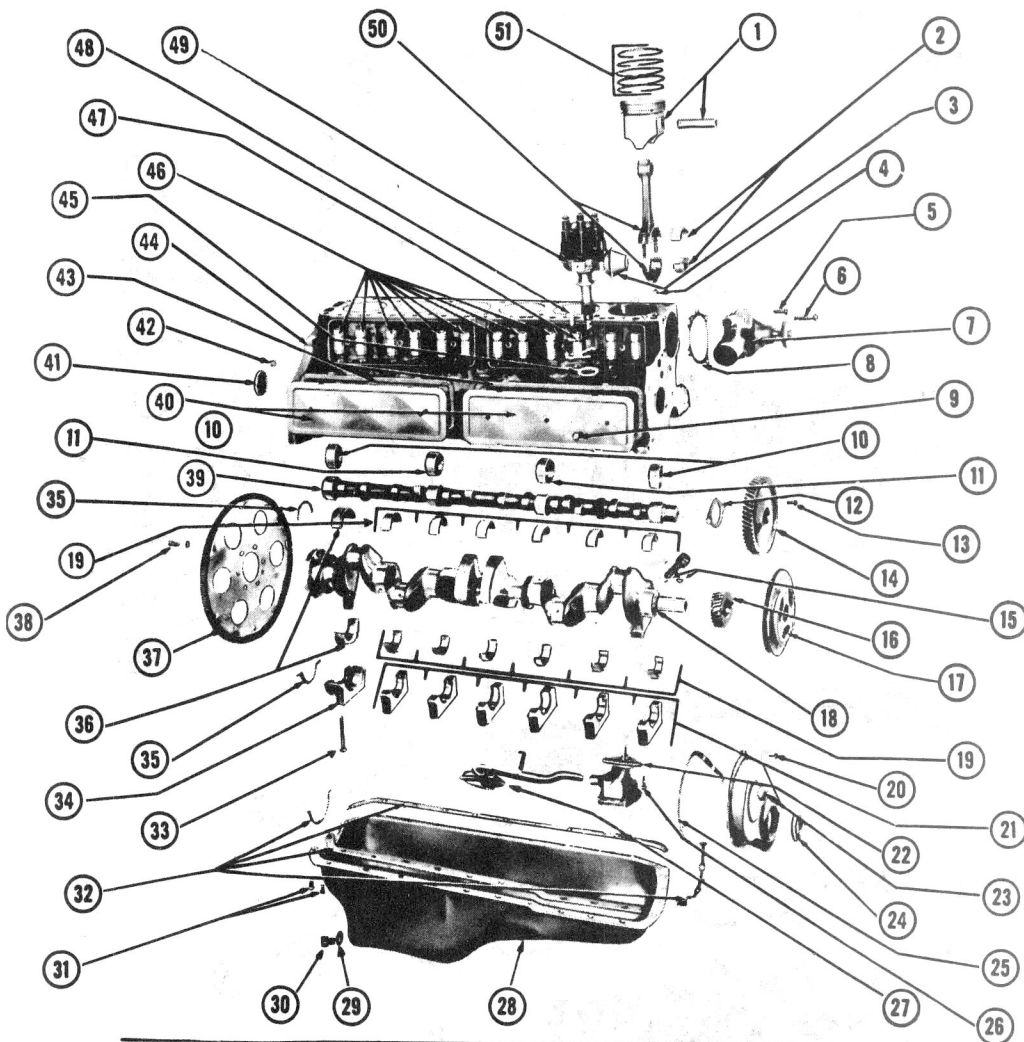
1975-76 OLDSMOBILE ENGINE IDENTIFICATION

CODE LOCATION: 250 L6 Engine Code on right side of block to rear of distributor.
 8 Cylinder Engine Code on Engine Oil Filler Tube on all except Omega 350 Engine.
 Omega 350 Engine Code on right side face of Cylinder Block.

ENGINE CODE PREFIX CHART*

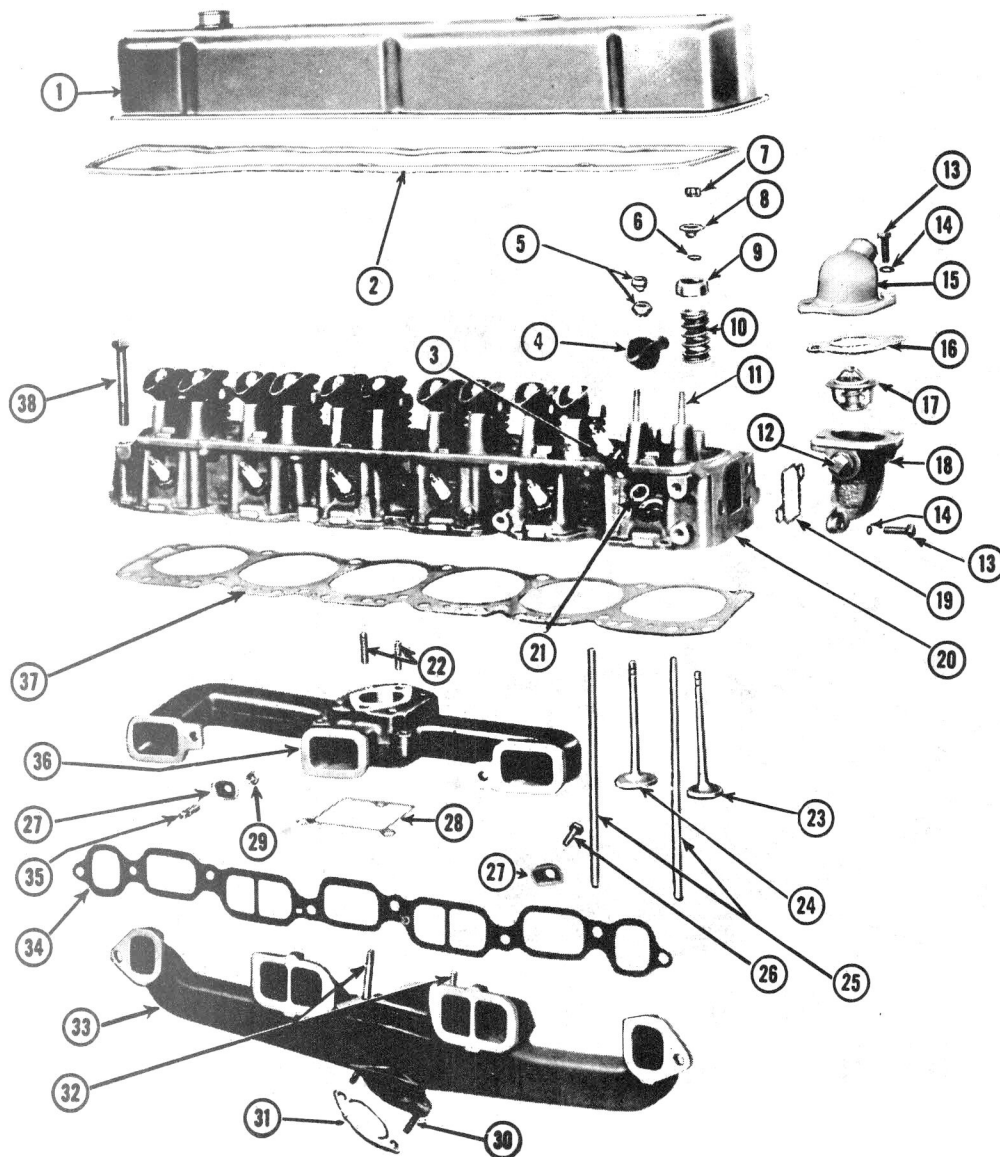
* Note: For reference only — do not order engines from this chart

Model Year	ENGINE				
	250 L6	260 V8	350/2 BC/	350/4 BC/	455
1975	CCD	QA	RE	RB	UB
	CCF	QB	RF	RN	UC
		QC	RH	RO	UD
		QD	RI	RW	UE
		QK	RK	RX	U3
		QN	RS	RY	U4
		QP	RT	RZ	U5
		QT	RU	Q2	VB
			RV	Q3	VD
				Q5	VE
				Q6	V3
				QU	V4
				QW	V5
	1976	CCD	QA	PA	PE
CCF		QB	PB	PF	UD
		QC	PC	PT	UE
		QD	PD	PU	UJ
		QK		Q2	U3
		QN		Q3	U4
		QP		Q5	
		QT		Q6	



1966-71 SIX CYLINDER CRANKCASE AND PARTS
 (TYPICAL)

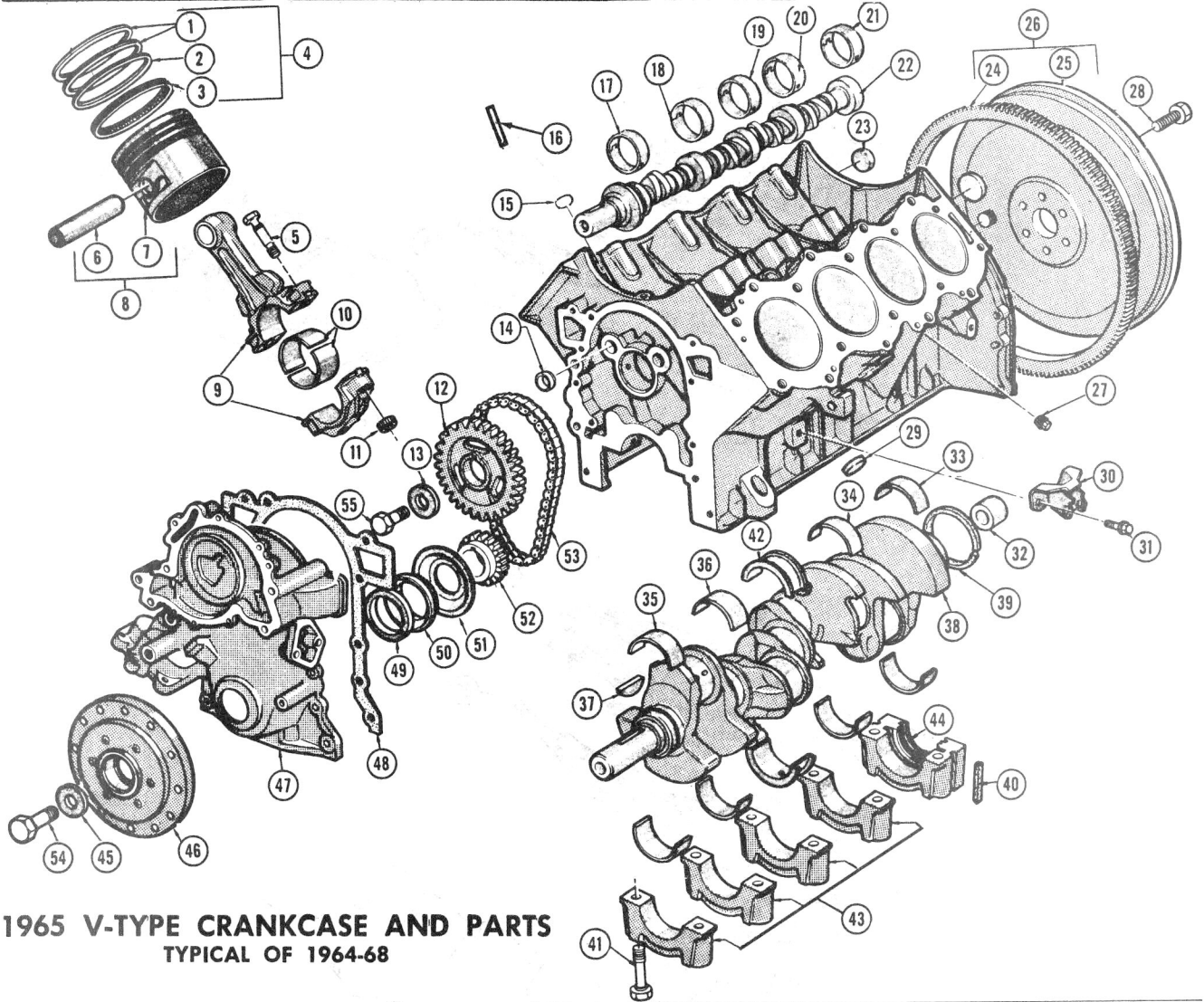
Key	Description	Group	Key	Description	Group
1	Piston and Pin Assembly, Engine	0.629	26	Bolt	N.L.
2	Bearing, Connecting Rod	0.616	27	Pipe, Screen and Support, Engine Oil Pump	1.656
3	Control, Distributor Vacuum	2.410	28	Pan, Engine Oil	1.426
4	Nut, Connecting Rod Bolt	0.626	29	Gasket, Oil Pan Drain Plug	1.456
5	Bolt	N.L.	30	Plug or Screw, Engine Oil Pan Drain	1.453
6	Bolt	N.L.	31	Bolt, Oil Pan to Block	1.428
7	Pump, Water	1.069	32	Gasket, Oil Pan	1.429
8	Gasket, Water Pump Body	1.079	33	Bolt, Crankshaft Bearing Caps to Cylinder Crankcase	0.056
9	Bolt, Lockwasher and Seal, Push Rod Cover	0.446	34	Cap, Crankshaft Bearing—#7 location	0.105
10	Bearing, Camshaft — #1 and #4 locations	0.539	35	Seal, Crankshaft Rear Bearing Oil	0.137
11	Bearing, Camshaft — #2 and #3 locations	0.539	36	Bearing, Crankshaft Rear	0.106
12	Bearing, Camshaft Thrust	0.533	37	Flywheel, Engine Crankshaft	0.666
13	Bolt	N.L.	38	Bolt or Screw, Flywheel to Crankcase	0.669
14	Gear or Sprocket, Engine Camshaft	0.735	39	Camshaft, Engine	0.519
15	Bolt, Engine Camshaft Gear or Sprocket to Shaft	0.738	40	Cover, Push Rod	0.439
16	Gear or Sprocket, Engine Crankshaft Timing	0.728	41	Plug, Camshaft Rear Bearing Cup	0.553
17	Balance, Harmonic	0.659	42	Plug	N.L.
18	Crankshaft, Engine	0.646	43	Gasket, Push Rod Cover	0.443
19	Bearing, Crankshaft	0.096	44	Block and Piston Assembly	0.033
20	Bolt, Crankcase Front End Cover to Block	0.206	45	Gasket, Ignition Timer Distributor	2.363
21	Cap, Crankshaft Main Bearing—#1-2-3-4-5-6 locations	0.105	46	Lifter, Engine Valve	0.459
22	Pump, Engine Oil	1.652	47	Clamp, Engine Distributor	2.363
23	Cover, Crankcase Front End	0.206	48	Bolt	N.L.
24	Seal, Crankcase Front End Cover Oil	0.213	49	Distributor, Ignition	2.361
25	Gasket, Crankcase Front End Cover	0.207	50	Rod, Connecting	0.603
			51	Ring, Piston	0.643



1966-71 SIX CYLINDER HEAD, ROCKER ARMS AND COVER

(TYPICAL)

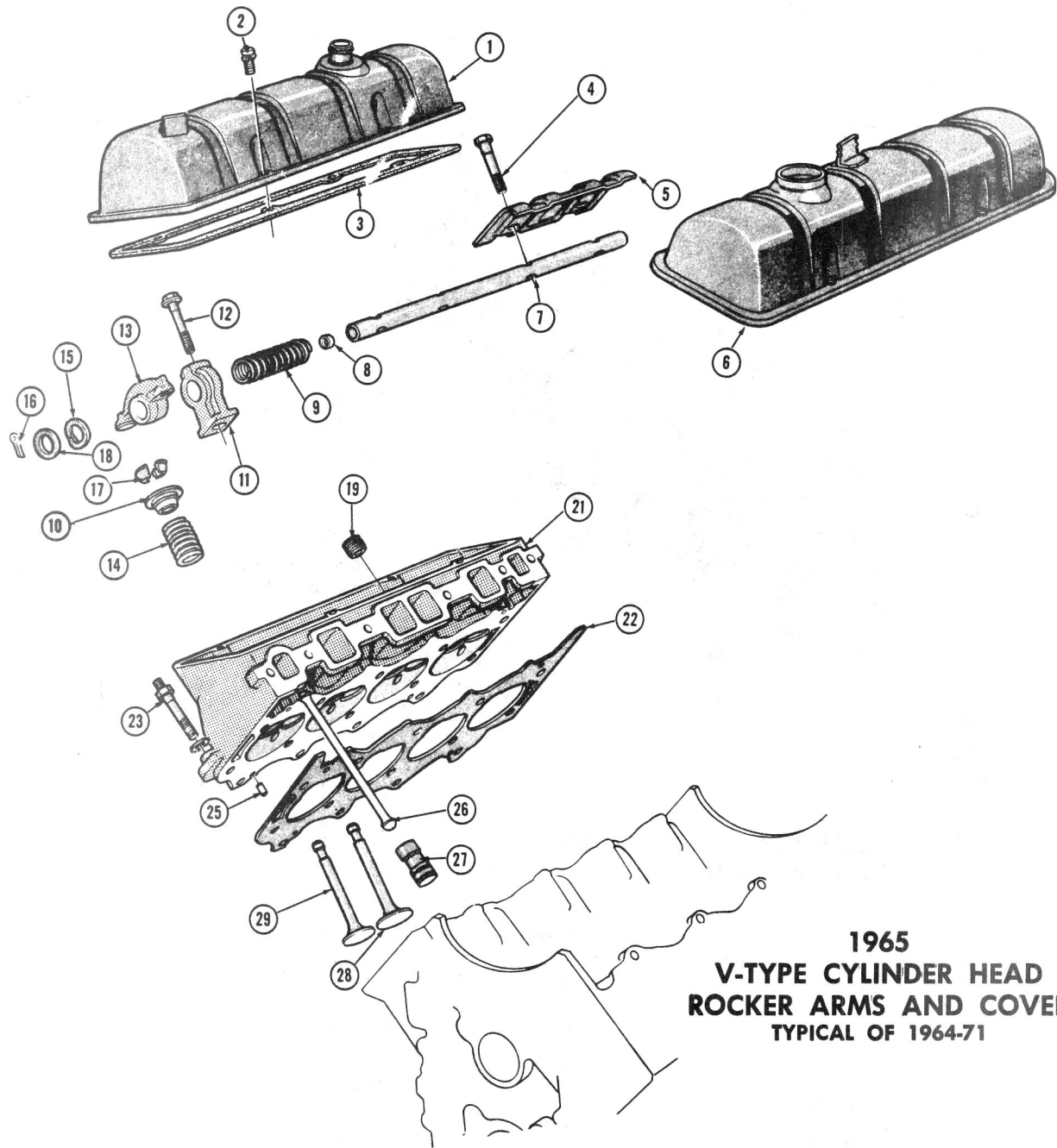
Key	Description	Group	Key	Description	Group
1	Cover, Valve Rocker Arm	0.386	20	Head, Cylinder	0.269
2	Gasket, Valve Rocker Arm Cover	0.423	21	Gasket, Spark Plug	2.270
3	Plug, Spark	2.270	22	Stud, Carburetor Attaching	3.288
4	Arm, Ball and Nut, Engine Valve Rocker	0.333	23	Valve, Engine—Intake	0.296
5	Ball and Nut Units, Valve Rocker Arm	0.429	24	Valve, Engine—Exhaust	0.297
6	Seal, Valve Stem Oil	0.308	25	Rod, Engine Valve Push	0.426
7	Key, Engine Intake and Exhaust Valve Stem	0.310	26	Bolt, Exhaust Manifold Clamp	N.L.
8	Cap, Valve Spring	0.309	27	Clamp, Intake and Exhaust Manifold	3.273
9	Shield, Valve Stem Oil	0.308	28	Gasket, Exhaust Manifold to Intake Manifold	3.272
10	Spring, Engine Intake and Exhaust Valve	0.303	29	Nut, Inlet and Exhaust Manifold Stud	N.L.
11	Stud, Engine Valve Rocker Arm Ball	0.429	30	Stud, Exhaust Pipe Attaching to Exhaust Manifold	3.275
12	Plug	N.L.	31	Packing, Exhaust Pipe	3.611
13	Bolt	N.L.	32	Stud, Inlet Manifold to Exhaust Manifold	3.275
14	Lockwasher	N.L.	33	Manifold, Exhaust	3.601
15	Outlet, Cylinder Head Water	1.153	34	Gasket, Intake and Exhaust Manifold to Cylinder Head	3.272
16	Gasket, Engine Water Outer	1.154	35	Stud, Inlet and Exhaust Manifold Clamp	3.275
17	Thermostat, Motor	1.246	36	Manifold, Fuel Intake	3.265
18	Housing, Thermostat	1.251	37	Gasket, Cylinder Head	0.289
19	Gasket, Thermostat Housing	1.252	38	Bolt, Cylinder Head	0.293



1965 V-TYPE CRANKCASE AND PARTS
TYPICAL OF 1964-68

Key	Description	Group
1	Ring, Piston Compression	0.643
2	Ring, Piston Oil Seal	0.643
3	Expander, Piston Ring Oil	N.L.
4	Ring Set, Piston	0.643
5	Bolt, Connecting Rod	0.623
6	Pin, Piston	0.636
7	Piston	N.L.
8	Piston and Pin Assembly	0.629
9	Rod, Connecting	0.603
10	Bearing Package, Connecting Rod	0.616
11	Nut, Connecting Rod Bolt	0.626
12	Gear or Sprocket, Engine Camshaft	0.736
13	Washer	N.L.
14	Plug	
15	Plug	
16	Pin, Camshaft Gear	0.738
17	Bearing, Camshaft—#1	0.539
18	Bearing, Camshaft—#2	0.539
19	Bearing, Camshaft—#3	0.539
20	Bearing, Camshaft—#4	0.539
21	Bearing, Camshaft—#5	0.539
22	Camshaft, Engine	0.519
23	Plug	
24	Gear, Flywheel Ring	0.673
25	Flywheel — Part of Item 26	N.L.
26	Flywheel, Engine Crankshaft	0.666
27	Plug, Engine	0.034

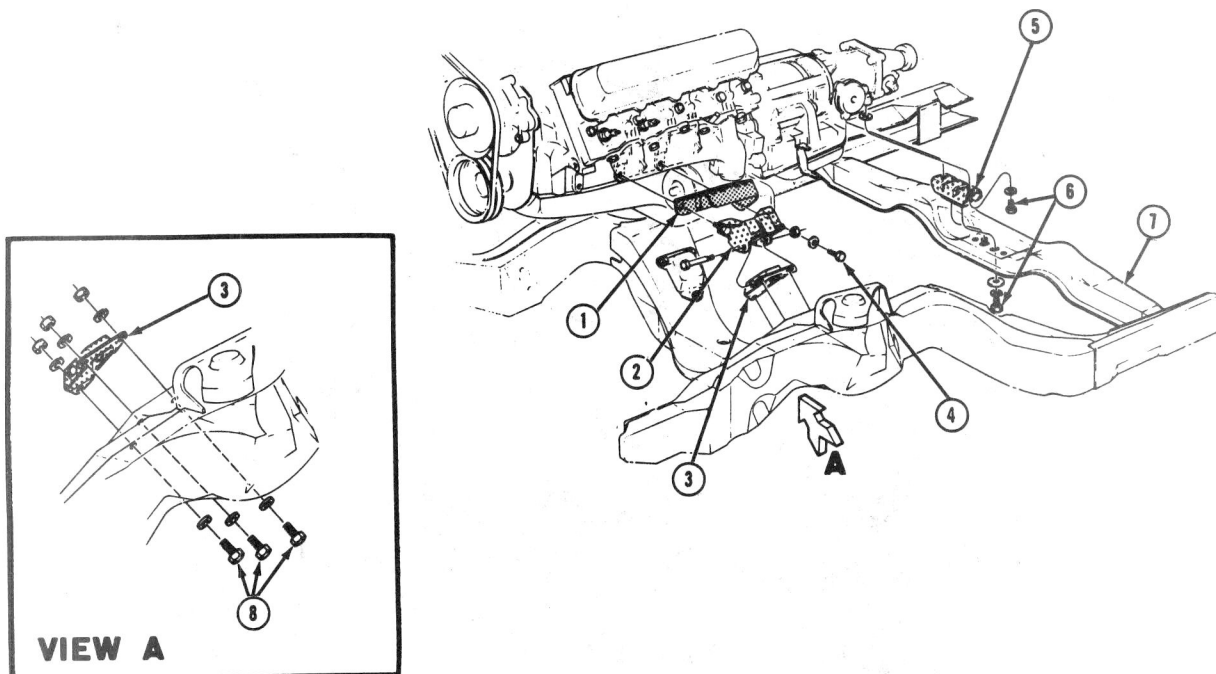
Key	Description	Group
28	Bolt or Screw, Flywheel to Crankshaft	0.669
29	Plug	
30	Mount or Pad Assembly, Engine Front	0.027
31	Bolt, Engine Mounting to Frame Bracket	0.002
32	Bearing, Clutch Pilot	0.649
33	Bearing, Crankshaft Rear	0.106
34	Bearing, Crankshaft Rear Intermediate	0.103
35	Bearing, Crankshaft Front	0.096
36	Bearing, Crankshaft Front Intermediate	0.099
37	Key, Engine Crankshaft Gear	0.729
38	Crankshaft, Engine	0.646
39	Seal, Crankshaft Rear Main—Packing	0.137
40	Seal, Rear Bearing Oil	0.137
41	Bolt, Crankshaft Bearing Caps to Cylinder Crankcase	0.056
42	Bearing, Crankshaft Centre Thrust	0.101
43	Cap, Bearing	N.L.
44	Cap, Rear Bearing	N.L.
45	Washer, Harmonic Balancer and Pulley	0.662
46	Balancer, Harmonic	0.659
47	Cover, Crankcase Front End	0.206
48	Gasket, Crankcase Front End Cover	0.207
49	Packing, Crankshaft Front End Cover Oil Shedder	0.213
50	Shedder, Crankcase Front End Cover Oil	0.211
51	Slinger, Crankshaft Oil	0.648
52	Gear or Sprocket, Engine Crankshaft Timing	0.728
53	Chain, Engine Timing	0.724
54	Bolt, Harmonic Balancer Retaining	0.662
55	Bolt, Engine Camshaft Gear or Sprocket to Shaft	0.738



1965
V-TYPE CYLINDER HEAD
ROCKER ARMS AND COVER
TYPICAL OF 1964-71

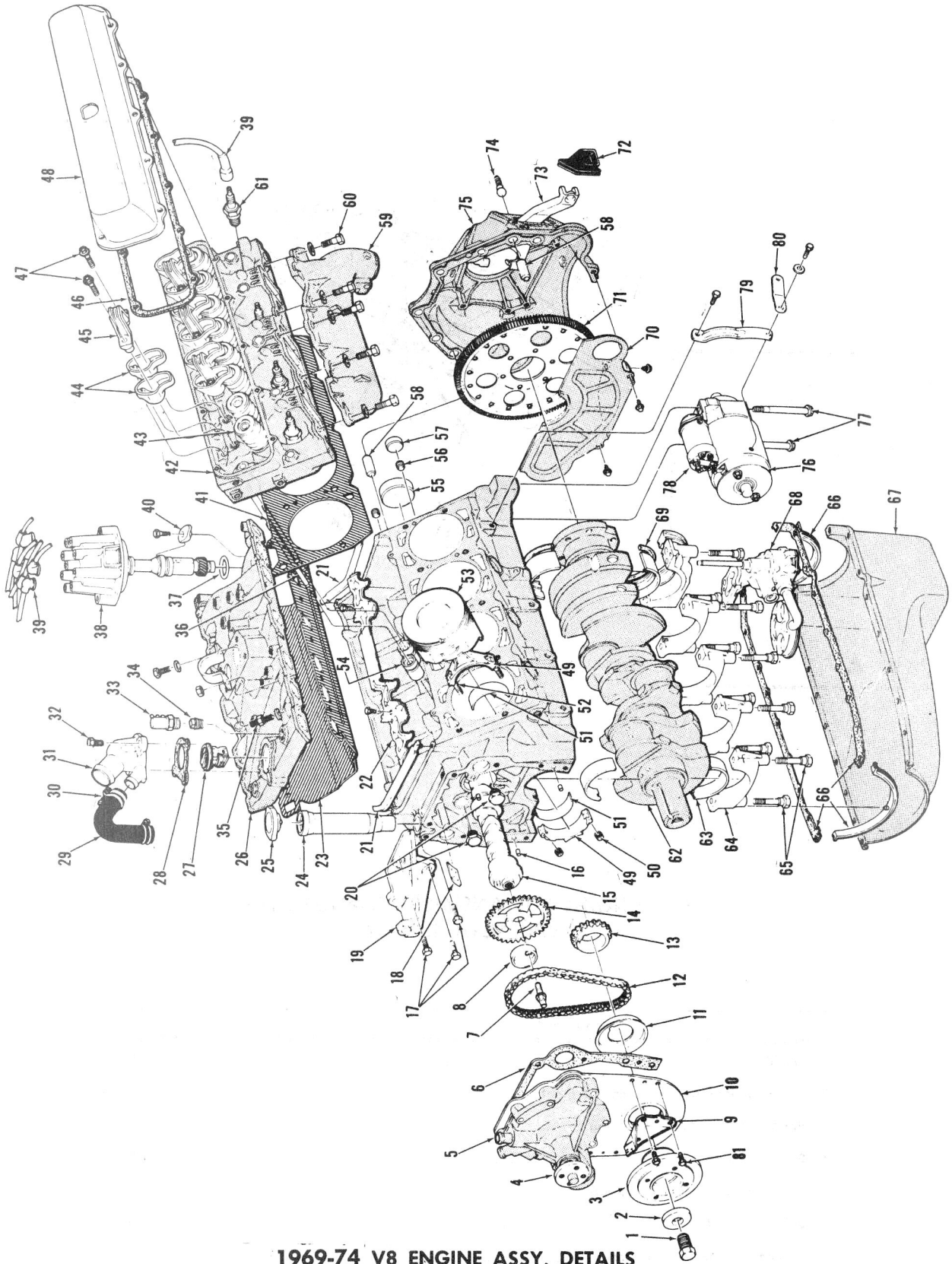
Key	Description	Group
1	Cover, Valve Rocker Arm—Right	0.386
2	Bolt or Screw, Valve Rocker Arm Cover to Cylinder Head	0.413
3	Gasket, Valve Rocker Arm Cover	0.423
4	Screw, Valve Rocker Arm Shaft Bracket to Cylinder Head	0.349
5	Baffle, Valve Rocker Arm Oil	0.354
6	Cover, Valve Rocker Arm—Left	0.386
7	Shaft, Valve Rocker Arm	0.353
8	Plug, Valve Rocker Arm Shaft End	0.356
9	Spring, Valve Rocker Arm Shaft—Short	0.376
10	Cap, Valve Spring	0.309
11	Bracket, Valve Rocker Arm Shaft	0.349
12	Screw, Valve Rocker Arm Shaft Bracket to Cylinder Head	0.349
13	Arm, Engine Valve Rocker	0.333

Key	Description	Group
14	Spring, Engine Intake and Exhaust Valve	0.303
15	Washer, Valve Rocker Arm Shaft Spring	0.376
16	Pin	N.L.
17	Key, Engine Intake and Exhaust Valve Stem	0.310
18	Washer, Valve Rocker Arm Shaft	0.373
19	Plug	N.L.
21	Head, Cylinder	0.269
22	Gasket, Cylinder Head	0.289
23	Bolt, Cylinder Head	0.293
25	Pin, Cylinder Head to Cylinder Crankcase Dowel	0.253
26	Rod, Engine Valve Push	0.426
27	Lifter, Engine Valve	0.459
28	Valve, Engine—Intake	0.296
29	Valve, Engine—Exhaust	0.297



**1969 ENGINE & TRANSMISSION MOUNTING
(TYPICAL OF 1970-72)**

Key	Description	Group
1	Shield, Motor Mount	0.029
2	Mount or Pad Assembly, Engine Front	0.027
3	Bracket, Engine Front Mounting	0.029
4	Bolt — $\frac{7}{16}$ - 14 x 1	8.900
5	Mounting, Transmission Support	4.081
6	Bolt — $\frac{7}{16}$ - 14 x 1	8.900
7	Member, Frame Second Cross	7.011
8	Bolt — $\frac{3}{8}$ - 16 x $\frac{7}{8}$	8.900

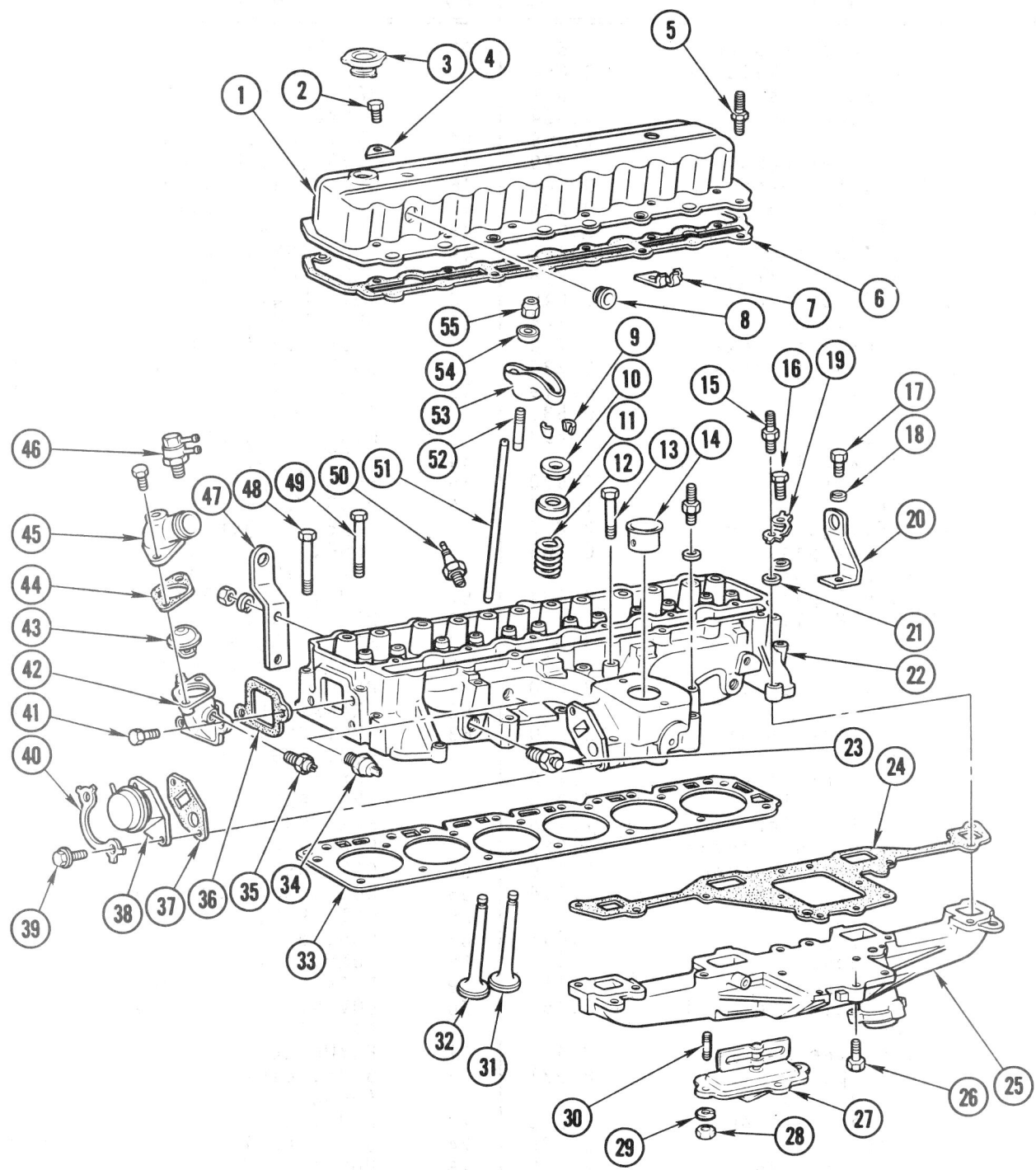


1969-74 V8 ENGINE ASSY. DETAILS

1969-74 V8 ENGINE ASSY. DETAILS

Key	Description	Group	Key	Description	Group
1	BOLT, Cr/s balancer	0.662	43	SPRING, valve	0.303
2	WASHER, Cr/s balancer	0.662		KEY, valve stem	0.310
3	BALANCER, Cr/s	0.659		VALVE, int.	0.296
4	HUB, water pump	1.064		VALVE, exh.	0.297
5	PUMP ASSY., water	1.069	44	ARM, rocker	0.333
	GKT., water pump mtg.	1.079	45	PIVOT, push rod	0.429
6	GKT., frt. cover	0.207	46	GKT., valve cover	0.423
7	BOLT, Cm/s gear	0.738	47	BOLT, pivot (8.900)	0.429
8	ECCENTRIC	3.935	48	COVER, valve	0.386
9	INDICATOR, timing	0.219	49	ROD ASSY., conn.	0.603
10	COVER, eng. (frt.)	0.206		CAP, rod conn.	N.S.S
11	SLINGER, Cr/s oil	0.648	50	NUT, brg. cap bolt	0.626
12	CHAIN, timing	0.724	51	BRG. PKG., conn.	0.616
13	GEAR, Cr/s sprocket	0.728		(upr. to lwr.)	
14	GEAR, Cm/s sprocket	0.736	52	BOLT, conn. rod cap	0.623
15	CAMSHAFT	0.519	53	PISTON & PIN	0.629
	BEARING, Cm/s	0.539		PIN, piston wrist	0.636
16	PIN, dowel	0.293		RING PKG., piston	0.643
	(5/16" x 9/16")		54	LIFTER ASSY., valve	0.459
17	BOLT, brkt.	8.900	55	PLUG, cup (2 3/32")	0.034
18	BAFFLE	1.750	56	PLUG, pipe - R.H.	0.034
19	BRACKET, gen. mtg.	2.277		(3/8"-18 hex.)	
20	PLUG, oil pass.	0.034		PLUG, pipe - L.H.	0.034
	(frt. R.H. 5/8"-18)			(3/8"-18 sq. hd.)	
	PLUG, oil pass.	0.034	57	PLUG, cup (29/32")	0.034
	(frt. L.H. 11/16"-16)		58	PIN, dowel	0.293
21	SEAL, int. mani.	3.270	59	MANIFOLD, exh.	3.601
	(frt.)		60	BOLT, mani. to head	3.275
	SEAL, int. mani.	3.270	61	PLUG, spark	2.270
	(rear)		62	CRANKSHAFT	0.646
22	BAFFLE, int. mani.	3.270	63	BRG. PKG. Cr/s frt.	0.096
	oil			BRG. PKG. Cr/s frt.	0.099
23	GASKET, int. mani.	3.270		inter.	
24	TUBE, oil filler	1.745		BRG. PKG. Cr/s center	0.101
25	CAP, oil filler	1.758		BRG. PKG. Cr/s rr. inter.	0.103
26	MANIFOLD, fuel intake	3.265		BRG. PKG. Cr/s rear	0.106
27	T/STAT., water temp.	1.246	64	CAP, brg.	N.S.S
28	GKT., water outlet	1.154	65	BOLT, Cr/s brg. cap	0.056
	mtg.		66	GKT. PKG, oil pan	1.429
29	HOSE, by-pass	1.097	67	PAN, oil	1.426
30	CLAMP, hose	1.166	68	PUMP, oil	1.652
31	OUTLET, water	1.153	69	PACKING, Cr/s brg.	0.137
32	BOLT, outlet to mfld.	1.153	70	COVER, flywheel hsg.	0.679
	(8.900)			(lwr.)	
33	SWITCH, thermo vac.	2.410	71	FLYWHEEL, Cr/s	0.666
34	PLUG, pipe	8.971	72	BOOT, clutch fork	0.797
	(1/2" sq. hd.)			(rubber)	
35	BOLT, mani. to head	3.275	73	FORK, clutch release	0.795
36	ROD, push	0.426	74	STUD, ball	0.796
37	GKT., dist. mtg.	2.363	75	HOUSING, flywheel	0.683
38	DISTRIBUTOR ASSY.	2.361	76	MOTOR, starting	2.041
	CAP, dist.	2.367	77	BOLT, starting mtr.	2.077
39	WIRE, spark plug	2.240	78	SWITCH, starting mtr.	2.100
40	CLAMP, dist. mtg.	2.363	79	BRACE, starting mtr.	2.077
41	GASKET, head	0.289	80	SHIM, mtr. stud	2.077
42	HEAD	0.269	81	BOLT, frt. cover to block	0.206

**1976 6-CYL. 250 ENGINE HEAD, MANIFOLD AND RELATED PARTS
(WITH INTEGRAL CYL. HEAD AND MANIFOLD)**





F-88
OLDSMOBILE

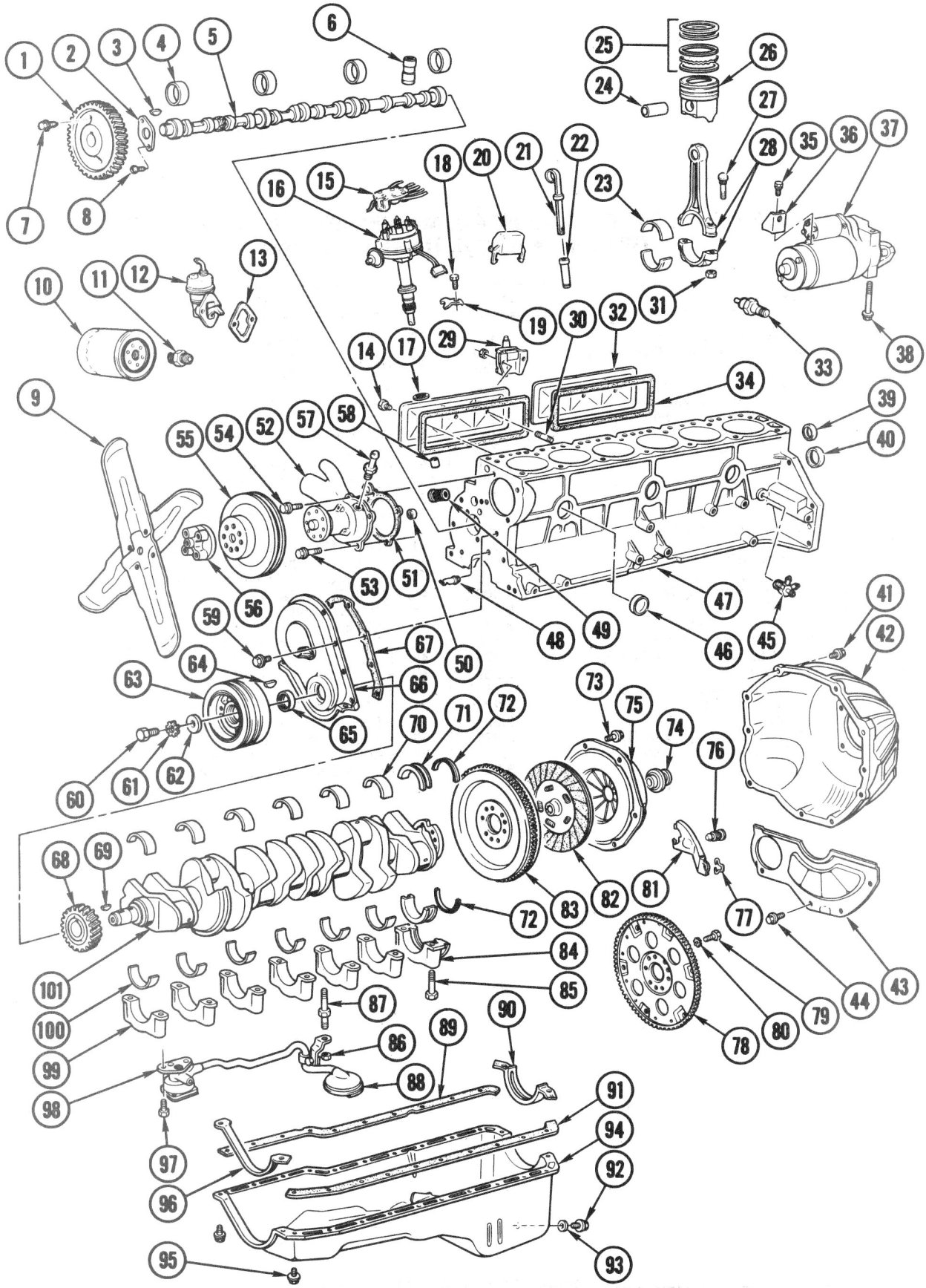
PARTS CATALOGUE

**1976 6-CYL. 250 ENGINE HEAD, MANIFOLD & RELATED PARTS
(With Intregal Cyl. Head & Manifold)**

Key	Description	Group
1	COVER ASM., Valve Rocker Arm	0.386
2	BOLT, Valve Rocker Arm Cover ($\frac{5}{16}$ -18 x $\frac{5}{8}$)	8.900
3	CAP, Oil Filter	1.758
4	REINFORCEMENT, Valve Rocker Arm Cover Bolt	0.413
5	STUD, Valve Rocker Arm Cover	0.386
6	GASKET, Valve Rocker Arm Cover	0.423
7	CLIP, Spark Control Pipe	2.420
8	GROMMET, Vent Hose Connector	1.745
9	KEY, Valve Stem	0.310
10	CAP, Valve Spring	0.309
11	SHIELD, Valve Spring Oil	0.308
12	SPRING, Valve	0.303
13	BOLT, Cylinder Head ($\frac{3}{8}$ -16 x $4\frac{1}{4}$)	8.900
14	TUBE, Throttle Bore	3.680
15	STUD, Exhaust Manifold	3.613
16	BOLT, Exhaust Manifold End ($\frac{3}{8}$ -16 x $2\frac{1}{4}$)	3.275
17	BOLT, Engine Lifting Brkt. ($\frac{1}{16}$ -14 x 1)	8.900
18	LOCKWASHER ($\frac{7}{16}$)	8.931
19	LOCK, Exhaust Manifold End Bolt	3.613
20	BRACKET, Engine Lifting — Rear	N.S.
21	WASHER, Exhaust Manifold ($\frac{23}{64}$ x $\frac{3}{4}$ x $\frac{1}{32}$)	3.275
22	HEAD ASM., Cylinder	0.269
23	SWITCH, Metal Temperature/Engine Unit/	1.150
24	GASKET, Exhaust Manifold	3.270
25	MANIFOLD, Exhaust	3.601
26	BOLT, Exhaust Manifold ($\frac{3}{8}$ -16 x $2\frac{1}{4}$)	3.275
27	THERMOSTAT, Manifold Heat Control Valve	3.640
28	NUT ($\frac{3}{16}$ -24)	8.915

Key	Description	Group
29	LOCKWASHER ($\frac{5}{16}$)	8.931
30	STUD, Exhaust Manifold Heat Valve	3.680
31	VALVE, Exhaust	0.297
32	VALVE, Intake	0.296
33	GASKET, Cylinder Head	0.289
34	SWITCH, Oil Pressure	1.800
35	SWITCH ASM., Water Temperature/ Transmission Control Spark	1.150
36	GASKET, Thermostat Housing	1.252
37	GASKET, E.G.R. Valve	3.672
38	VALVE, E.G.R. Emission	3.670
39	BOLT, E.G.R. Valve Mtg. ($\frac{5}{16}$ -18 x $\frac{7}{8}$)	8.900
40	LOCK, E.G.R. Valve Bolt	3.680
41	BOLT, Thermostat Housing ($\frac{3}{8}$ -16 x 1)	8.900
42	HOUSING, Thermostat	1.251
43	THERMOSTAT, Cylinder Head Water Outlet	1.246
44	GASKET, Water Outlet	1.154
45	OUTLET, Water	1.153
46	VALVE, E.G.R. Vacuum Control	3.670
47	BRACKET, Engine Lifting — Front	N.S.
48	BOLT, Cylinder Head ($\frac{1}{2}$ -13 x $3\frac{37}{64}$)	0.293
49	BOLT, Cylinder Head ($\frac{1}{2}$ -13 x $4\frac{3}{8}$)	0.293
50	PLUG, Spark	2.270
51	ROD, Valve Push	0.426
52	STUD, Valve Push Rod Adjusting	0.429
53	ARM, Valve Rocker	0.333
54	BALL, Valve Rocker Arm	0.429
55	NUT, Valve Push Rod Adjusting	0.429

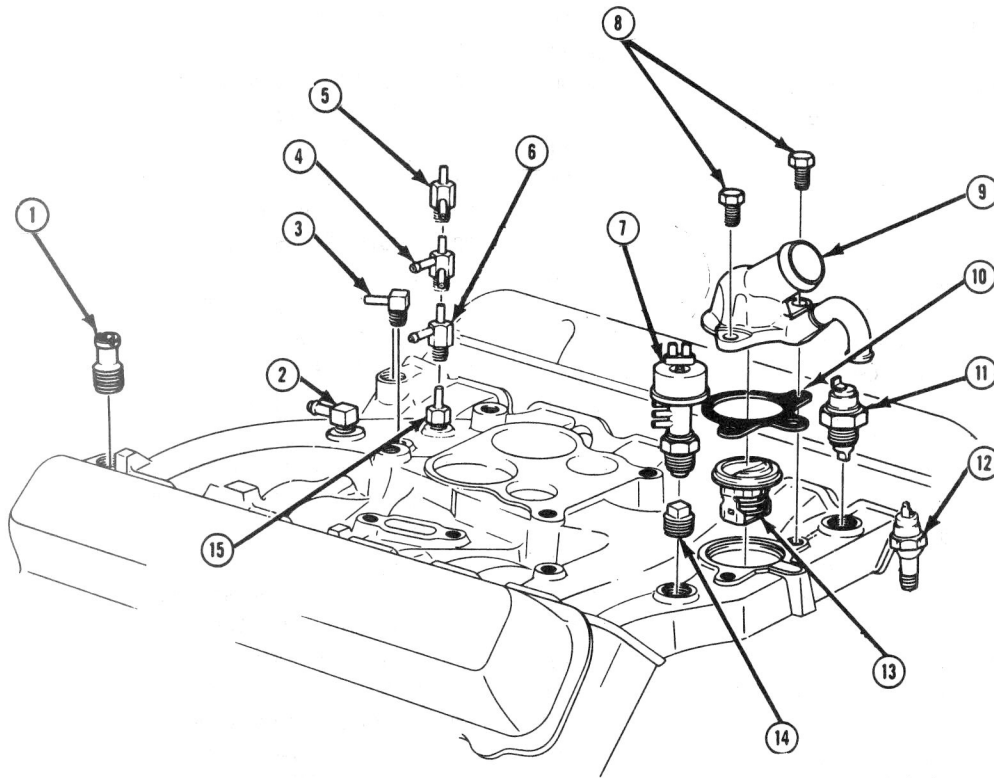
1976 6-CYL. 250 ENGINE BLOCK AND RELATED PARTS





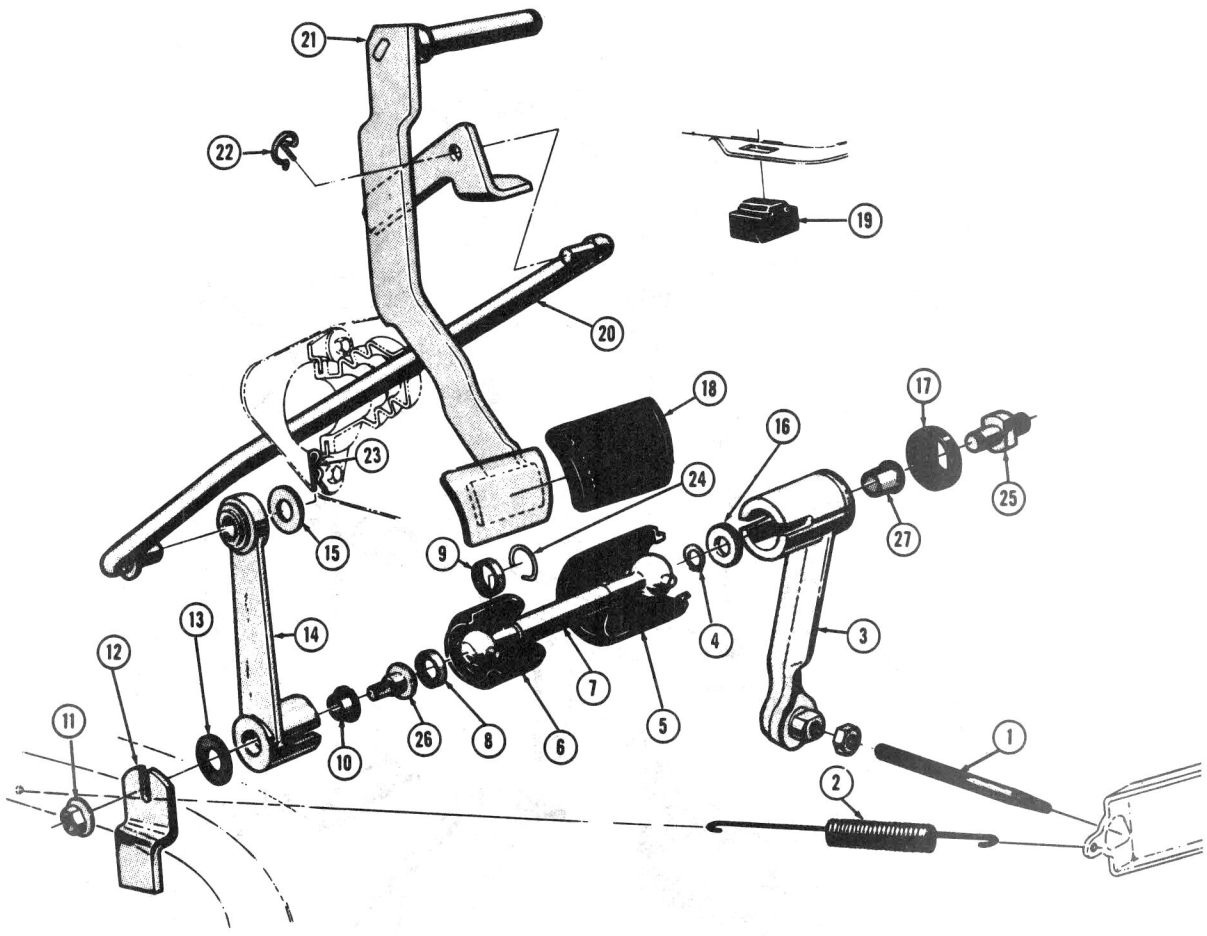
1976 6-CYL. 250 ENGINE BLOCK & RELATED PARTS

Key	Description	Group	Key	Description	Group
1	GEAR, Camshaft	0.736	52	PUMP ASM., Water	1.069
2	BEARING PKG., Camshaft Thrust	0.533	53	BOLT, Pump to Block ($\frac{5}{16}$ -18 x $\frac{7}{8}$)	8.900
3	KEY, Camshaft ($\frac{3}{16}$ x $\frac{3}{4}$)	8.960	54	BOLT, Pump to Block ($\frac{5}{16}$ -18 x $1\frac{1}{2}$)	8.900
4	BEARING, Camshaft	0.546	55	PULLEY, Water Pump & Fan	1.062
5	CAMSHAFT, Engine	0.519	56	SPACER, Engine Fan	1.064
6	LIFTER ASM., Valve	0.459	57	NIPPLE, By-Pass Hose	8.866
7	BOLT, Camshaft Gear ($\frac{1}{4}$ -20 x $\frac{1}{2}$)	8.906	58	BEARING, Distributor Shaft Pilot	2.375
8	SCREW, Bearing to Block ($\frac{1}{4}$ -20 x $\frac{1}{2}$)	8.977	59	SCREW, Cover to Block ($\frac{1}{4}$ -20 x $\frac{3}{16}$)	0.206
9	FAN, Engine	1.064	60	BOLT, Balancer to Crank ($\frac{1}{16}$ -20 x $1\frac{3}{16}$)	8.900
10	ELEMENT PKG., Oil Filter	1.836	61	LOCKWASHER, Balancer to Crank ($\frac{1}{16}$ Ext.)	8.932
11	CONNECTOR, Oil Filter	1.855	62	WASHER, Harmonic Balancer	0.662
12	PUMP PKG., Fuel	3.900	63	BALANCER ASM., Harmonic	0.659
13	GASKET, Fuel Pump	3.904	64	KEY, Harmonic Balancer ($\frac{3}{16}$ x $\frac{3}{4}$)	8.960
14	BOLT & SEAL ASM., Valve Cover ($\frac{5}{16}$ -18 x $\frac{1}{16}$)	0.446	65	SEAL ASM., Engine Front Cover Oil	0.213
15	HARNESS ASM., Spark Plug Wire	2.239	66	COVER ASM., Engine Front End	0.206
16	DISTRIBUTOR, Ignition H.E.I.	2.361	67	GASKET, Front End Cover	0.207
17	GASKET, Distributor	2.363	68	GEAR, Crankshaft	0.728
18	BOLT, Distributor Clamp ($\frac{3}{8}$ -16 x 1)	8.900	69	KEY, Crankshaft Gear ($\frac{3}{16}$ x $\frac{3}{4}$)	8.960
19	CLAMP, Distributor	2.363	70	BEARING PKG., Crankshaft	0.096
20	COVER, Coil	2.183	71	BEARING PKG., Crankshaft. #7 Location	0.106
21	ROD, Oil Level Indicator	1.516	72	SEAL, Crankshaft Rear Oil	0.137
22	TUBE, Oil Level Indicator Rod	1.516	73	BOLT, Cover to Block	N.S.
23	BEARING PKG., Connecting Rod	0.616	74	BEARING, Clutch Release	0.799
24	PIN, Piston	N.S.S.	75	COVER & PRESSURE PLATE ASM., Clutch	0.859
25	RING PKG., Piston	0.643	76	STUD, Clutch Release Fork Ball	0.796
26	PISTON ASM., Engine (Incl. #24)	0.629	77	SPRING, Clutch Fork Retaining	0.796
27	BOLT, Connecting Rod	0.623	78	FLYWHEEL, Engine (A.T.)	0.666
28	ROD ASM., Engine Connecting	0.603	79	BOLT, Flywheel to Crank ($\frac{1}{16}$ -20 x 1) (A.T.)	0.669
29	COIL ASM., Ignition	2.170	80	LOCKWASHER, Flywheel to Crank ($\frac{1}{16}$ Ext.)	8.932
30	BOLT & SEAL ASM., Push Rod Cover	0.443	81	FORK, Clutch	0.795
31	NUT, Connecting Rod Bolt	0.626	82	PLATE ASM., Clutch Driven	0.886
32	COVER, Valve Push Rod	0.439	83	FLYWHEEL, Engine (M.T.)	0.666
33	SWITCH, Engine Oil Pressure	1.800	84	CAP, Crankshaft Rear Bearing — #7	0.095
34	GASKET, Push Rod Cover	0.443	85	BOLT, Crankshaft Bearing Cap	0.056
35	BOLT, Brace to Starter ($\frac{5}{16}$ -18 x $\frac{5}{8}$)	8.977	86	NUT, Support Oil Pump Suction	N.S.
36	BRACE, Starter Motor	2.042	87	STUD, Bearing Cap	0.056
37	MOTOR ASM., Starter	2.041	88	PIPE, Screen & Support, Oil Pump Suction	1.656
38	BOLT, Starter to Block	2.042	89	GASKET PKG., Oil Pan	1.429
39	PLUG, Water Jacket — Rear (2 OD)	0.034	90	SEAL, Oil Pan — Rear	1.429
40	PLUG, Camshaft Bearing Hole	0.553	91	GASKET PKG., Oil Pan	1.429
41	BOLT, Housing to Block ($\frac{3}{8}$ -16 x $1\frac{1}{4}$)	8.900	92	SCREW, Oil Pan Drain	1.453
42	HOUSING, Clutch	0.683	93	GASKET, Oil Pan Drain Plug	1.456
43	COVER, Clutch Housing	0.679	94	PAN, Oil	1.426
44	SCREW, Cover to Housing ($\frac{1}{4}$ -20 x $\frac{1}{16}$)	8.977	95	BOLT & LOCKWASHER, Oil Pan to Block	1.428
45	FITTING, Vacuum	3.278	96	SEAL, Oil Pan — Front	1.429
46	PLUG, Water Jacket Side ($1\frac{1}{8}$)	0.034	97	BOLT, Pump to Block ($\frac{5}{16}$ -18 x $\frac{3}{4}$)	8.900
47	BLOCK ASM., Engine Cylinder	0.033	98	PUMP ASM., Oil	1.652
48	NOZZLE, Timing Gear Oil ($1\frac{1}{32}$)	0.748	99	CAP, Crankshaft Bearing	0.095
49	VALVE, Oil Filter By-Pass	1.837	100	BEARING PKG., Crankshaft	0.096
50	PLUG, Oil Gallery & Tappet Gallery Passage	1.531	101	CRANKSHAFT, Engine	0.646
51	GASKET, Water Pump	1.079			



1971-74 INTAKE MANIFOLD VACUUM FITTINGS & SWITCHES

Key	Description	Group
1	Nipple, Intake Manifold Water Outlet	8.866
2	Connector, Oil Cooler Pipes	4.128
3	Elbow, Intake Manifold Vacuum	3.265
4	Connector, Air Cleaner Vacuum Hose (2BC)	3.278
5	Connector, Air Cleaner Vacuum Hose (4BC)	3.278
6	Connector, Air Cleaner Vacuum Hose (4BC)	3.278
7	Switch, Thermostatic Vacuum Distributor Advance	2.408
8	Bolt, Water Pump Outlet Holding — $\frac{3}{16}$ - 18 x 1	8.900
9	Outlet, Cylinder Head Water	1.153
10	Gasket, Engine Water Outlet	1.154
11	Switch, Water Temperature	1.150
12	Switch, Oil Pressure	1.800
13	Thermostat, Motor	1.246
14	Plug, Distributor Vacuum Hose	8.971
15	Connector, Distributor Vacuum Hose	3.442

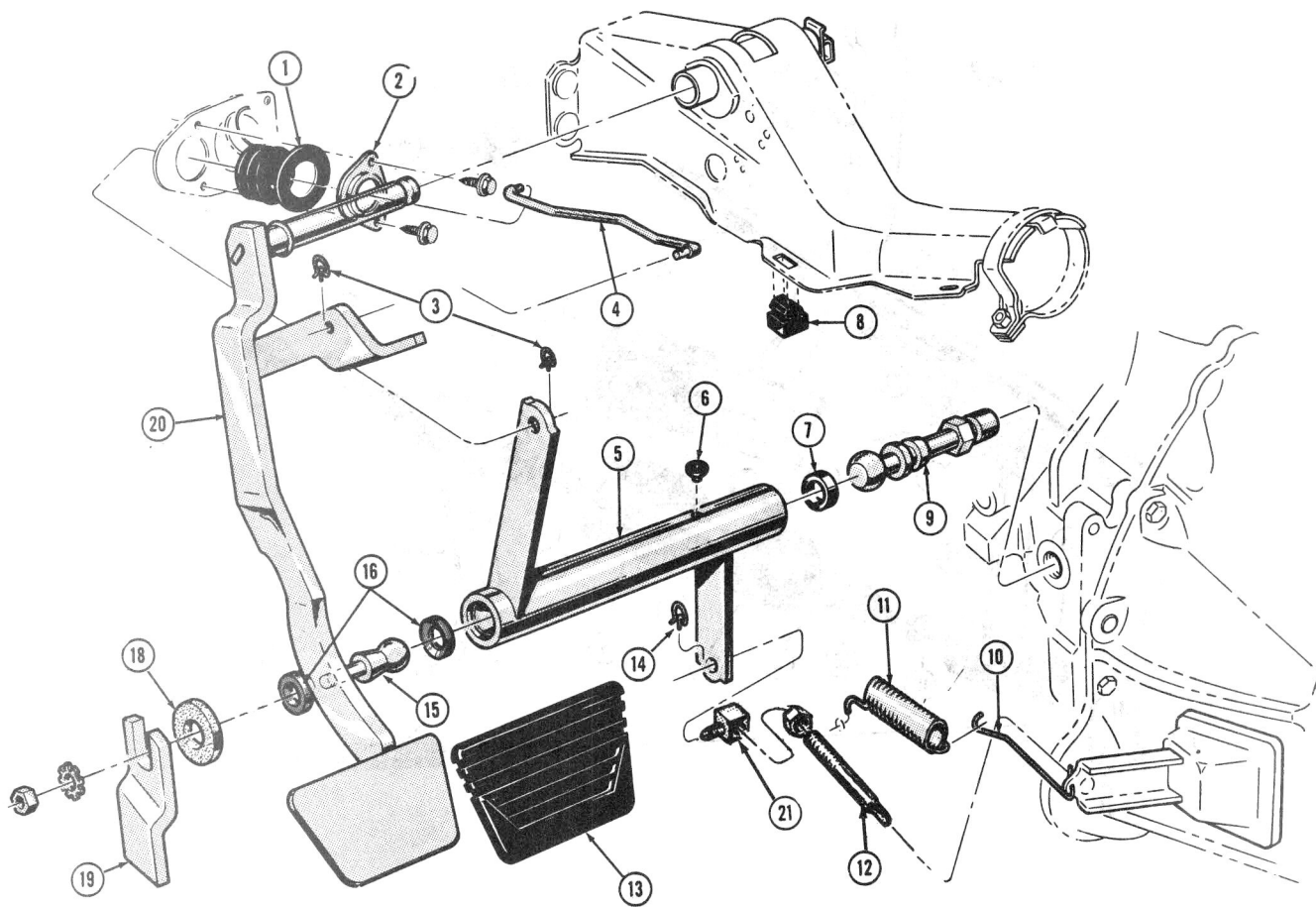


1964-65 V-6 CLUTCH CONTROL

(TYPICAL)

Key	Description	Group
1	Rod, Clutch Fork Push	0.787
2	Spring, Clutch Return	0.844
3	Lever, Clutch Equalizer—Inner	0.852
4	Retainer, Hairpin Type	N.L.
5	Seal, Clutch Equalizer—Inner Lever to Shaft	0.817
6	Seal, Clutch Equalizer—Outer Lever to Shaft	0.817
7	Shaft, Clutch Equalizer	0.806
8	Seat, Clutch Equalizer Shaft to Outer Lever—Outer	0.851
9	Seat, Clutch Equalizer Shaft to Outer Lever—Inner	0.851
10	Bushing, Equalizer to Pivot—Inner	0.851
11	Nut	N.L.
12	Bracket, Clutch Equalizer to Frame	0.852
13	Seal, Clutch Equalizer to Frame Bracket	0.817
14	Lever, Clutch Equalizer—Outer	0.852

Key	Description	Group
15	Washer	N.L.
16	Washer, Clutch Equalizer to Inner Pivot	0.851
17	Seal, Equalizer—to Inner Pivot	0.817
18	Pad, Clutch Pedal	0.830
19	Bumper, Clutch Pedal	0.829
20	Rod, Clutch Pedal Push	0.854
21	Pedal Assembly, Clutch	0.830
22	Retainer, Spring Clutch Release Rod	0.787
23	Retainer, Spring Clutch Release Rod	0.787
24	Spring, Clutch Lever Shaft Ball Stud Seat Retaining ..	0.851
25	Pivot, Clutch Equalizer Outer—to Bracket	0.851
26	Pivot, Clutch Equalizer Inner—to Engine	0.851
27	Bushing, Clutch Equalizer to Pivot—Outer	0.851

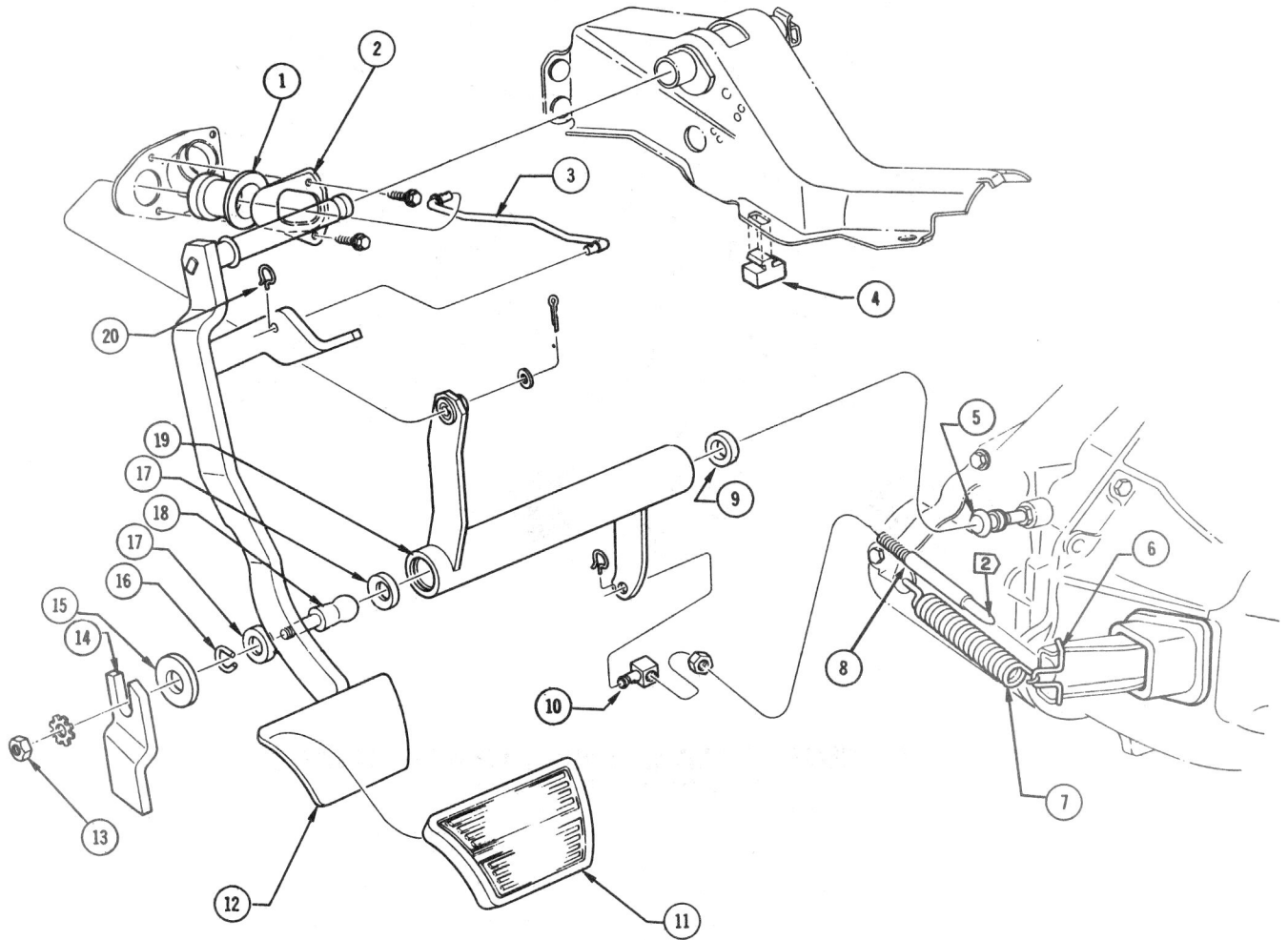


1964-65 V-8 CLUTCH CONTROL

(TYPICAL)

Key	Description	Group
1	Seal, Clutch Release Rod	0.829
2	Retainer, Clutch Release Rod to Clutch Equalizer	0.829
3	Retainer, Clutch Release Lower Rod	S.S.
4	Rod, Clutch Pedal Push	0.854
5	Equalizer, Clutch	0.852
6	Plug	N.L.
7	Seal, Rubber	0.851
8	Bumper, Clutch Pedal	0.829
9	Stud, Clutch Lever Shaft Ball—To Engine	0.851
10	Extension, Clutch Return Spring	0.846
11	Spring, Clutch Return	0.844

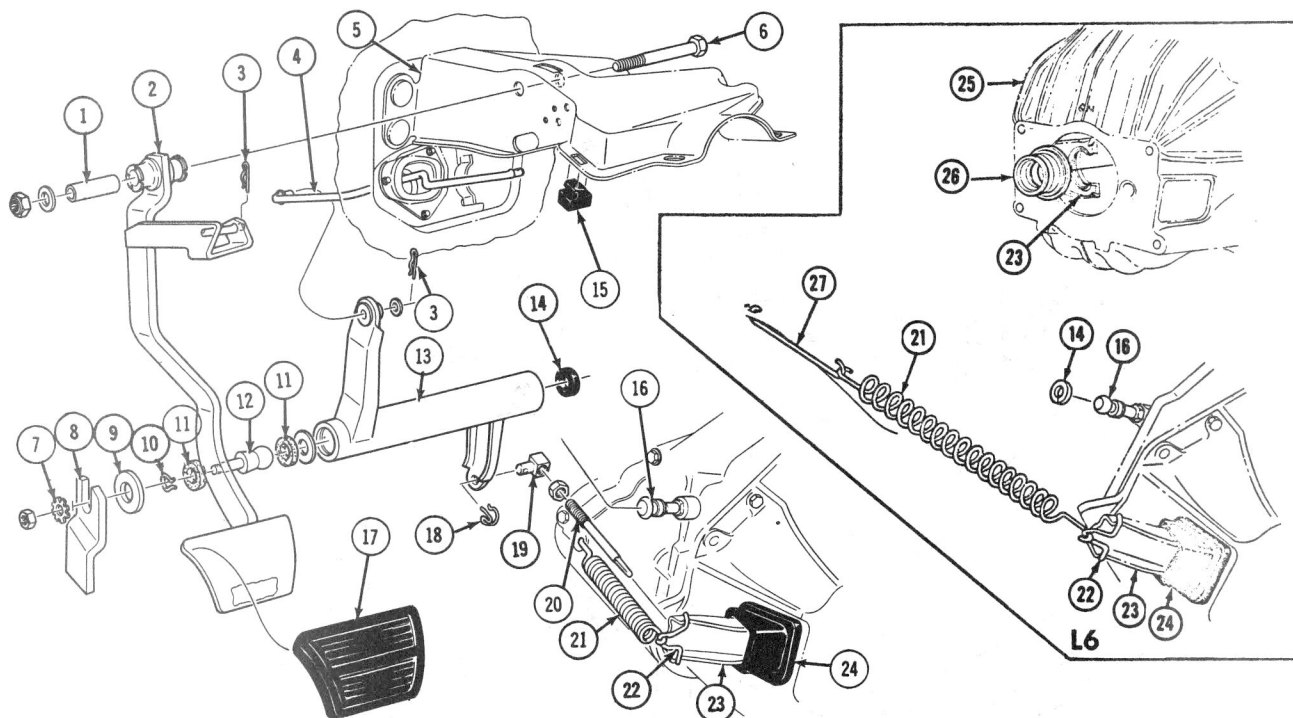
Key	Description	Group
12	Rod, Clutch Fork Push	0.787
13	Pad, Clutch Pedal	0.830
14	Retainer Spring, Clutch Release Rod	0.787
15	Stud, Clutch Equalizer to Frame Ball	0.851
16	Seat, Clutch Equalizer Ball Stud	0.851
18	Washer, Clutch Lever Shaft Ball Stud to Frame Dust Seal	0.851
19	Bracket, Clutch Equalizer to Frame	0.852
20	Pedal Assembly, Clutch	0.830
21	Swivel, Clutch Fork Push Rod	0.787



1966 V-8 CLUTCH CONTROL

Key	Description	Group
1	Bellows, Clutch Pedal Push Rod	0.829
2	Retainer, Clutch Release Bellows	0.829
3	Rod, Clutch Pedal Push	0.854
4	Bumper, Clutch Pedal	0.829
5	Stud, Clutch Lever Shaft Ball—To Engine	0.851
6	Extension, Clutch Release Fork	0.795
7	Spring, Clutch Return	0.844
8	Rod, Clutch Fork Push	0.787
9	Seal, Clutch Equalizer to Inner Pivot	0.851
10	Swivel, Clutch Fork Push Rod	0.787

Key	Description	Group
11	Pad, Clutch Pedal	0.830
12	Pedal Assembly, Clutch	0.830
13	Nut	S.S.
14	Bracket, Clutch Equalizer to Frame	0.852
15	Washer, Clutch Lever Shaft Ball Stud to Frame Dust Seal	0.851
16	Spring, Clutch Lever Shaft Ball Stud Seat Retaining	0.851
17	Seat, Clutch Equalizer Ball Stud—Nylon	0.851
18	Stud, Clutch Equalizer to Frame Ball	0.851
19	Equalizer, Clutch	0.852
20	Retainer, Clutch Release Rod to Clutch Equalizer	0.829

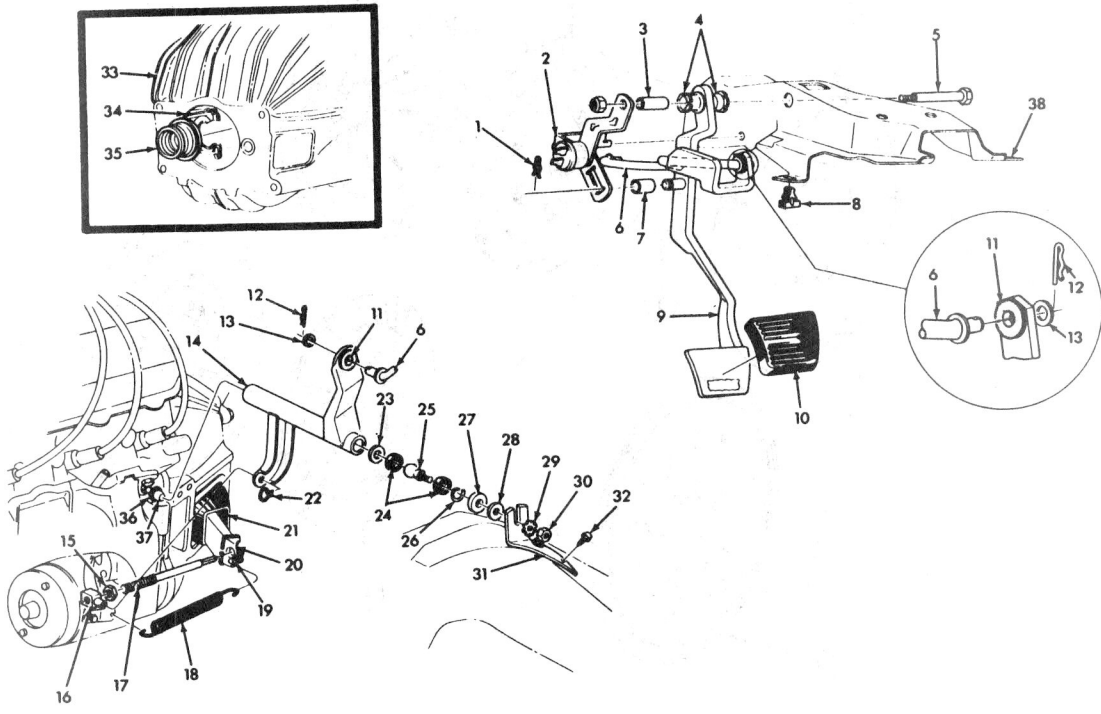


**1967 CLUTCH PEDAL AND LINKAGE DETAILS
 (TYPICAL OF 1968 THRU 1970)**

Key	Description	Group
1	Bushing, Clutch Pedal Shaft	0.831
2	Pedal Assy., Clutch	0.830
3	Retainer, Clutch Release Rod to Clutch Equalizer	0.829
4	Rod, Clutch Pedal Push	0.854
5	Bracket, Brake Pedal Mounting	4.634
6	Bolt (7/16-14 x 4 1/2)	SS
7	Washer, (3/8")	SS
8	Bracket, Clutch Equalizer to Frame	0.852
9	Washer, Clutch Lever Shaft Ball Stud to Frame	0.851
10	Spring, Clutch Lever Shaft Ball Stud Seat Retaining ..	0.851
11	Seat, Clutch Equalizer Ball Stud	0.851
12	Stud, Clutch Equalizer to Frame Ball	0.851
13	Equalizer, Clutch	0.852
14	Seal, Clutch Equalizer to Engine Stud	0.851
15	Bumper, Clutch Pedal	0.829

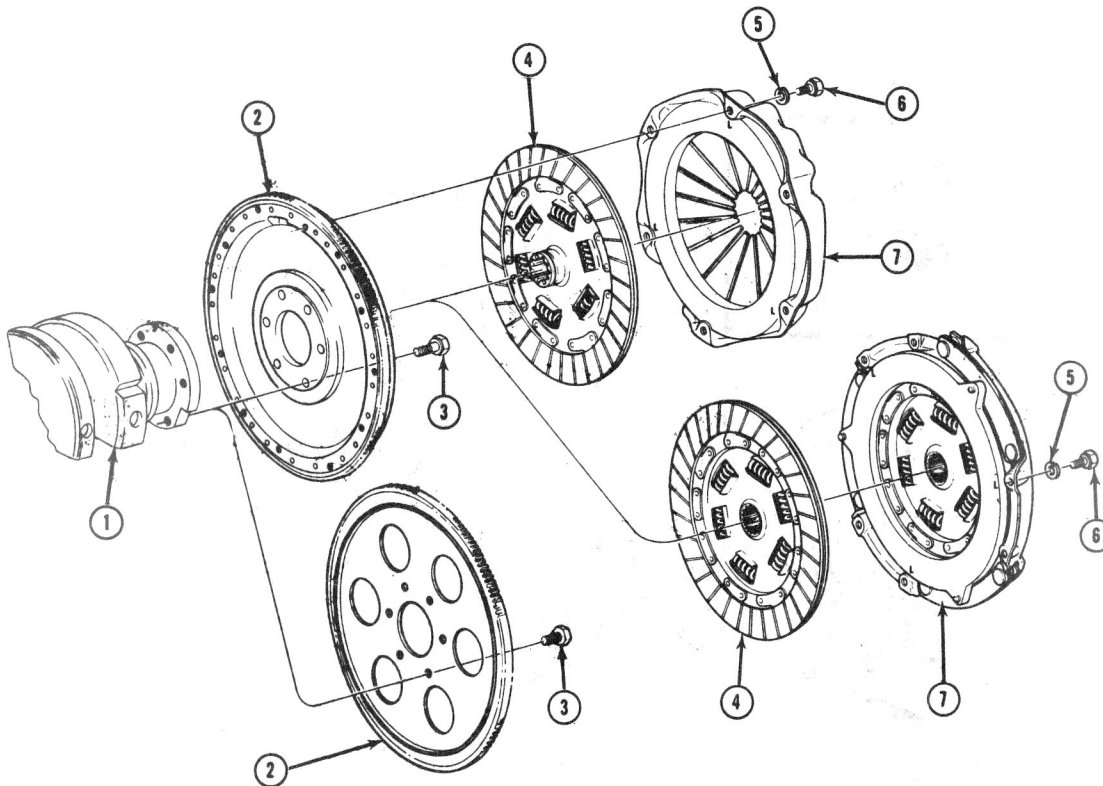
Key	Description	Group
16	Stud, Clutch Lever Shaft Ball—To Engine	0.851
17	Pad, Clutch Pedal	0.830
18	Retainer (G Clip)	SS
19	Swivel, Clutch Fork Push Rod	0.787
20	Rod, Clutch Fork Push	0.787
21	Spring, Clutch Return	0.844
22	Extension, Clutch Release Fork	0.795
23	Fork, Clutch Release	0.795
24	Boot, Clutch Fork	0.797
25	Housing, Flywheel	0.683
26	Bearing, Clutch Release	0.799
27	Hook, Clutch Return Spring	0.846

SS—Standard Stock



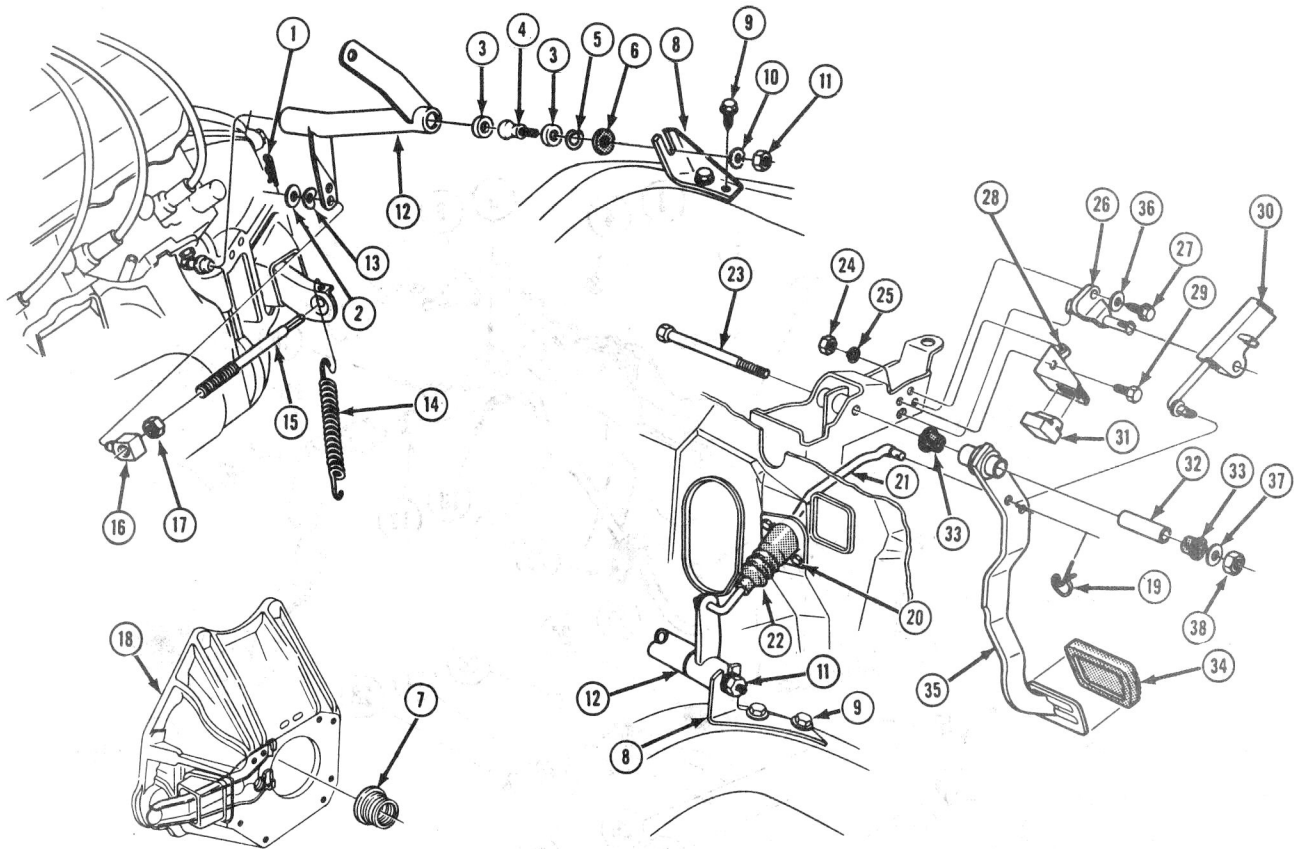
1971-1972 CLUTCH PEDAL & LINKAGE DETAILS

<u>Ill. No.</u>	<u>Group No.</u>	<u>Description</u>	<u>Ill. No.</u>	<u>Group No.</u>	<u>Description</u>
1	3.425	RETAINER	20	0.795	FORK
2	4.054	SWITCH, clutch start	21	0.797	BOOT
3	4.634	SPACER, pedal to brkt. pivot	22	0.787	RETAINER, rod ("G" type)
4	4.626	BUSHING, pedal	23	0.851	WASHER
5	8.900	BOLT (7/16"-14 x 4-1/2")	24	0.851	SEAT
6	0.854	ROD, clutch operating	25	0.851	STUD, equalizer to frame
7	0.837	SLEEVE, pedal (nylon)	26	0.851	SPRING
8	0.829	BUMPER	27	0.851	SEAL
9	0.830	PEDAL (less rubber pad)	28	2.334	WASHER
10	4.630	PAD	29	8.932	LOCKWASHER
11	4.037	BUSHING, rod to arm & equalizer	30	8.915	NUT
12	4.037	RETAINER, rod (hairpin type)	31	0.852	BRACKET, equalizer
13	4.037	WASHER	32	8.977	SCREW (15/16"-12 x 7/8")
14	0.852	EQUALIZER	33	0.683	HOUSING
15	8.916	NUT	34	0.795	FORK
16	0.787	SWIVEL, rod to equalizer arm	35	0.799	BEARING, clutch release
17	0.787	ROD, lower adjusting	36	0.851	SEAL
18	0.844	SPRING	37	0.851	STUD
19	0.795	EXTENSION, fork	38	4.634	BRACKET, pedal mounting



1971-75 FLYWHEELS AND CLUTCH DETAILS

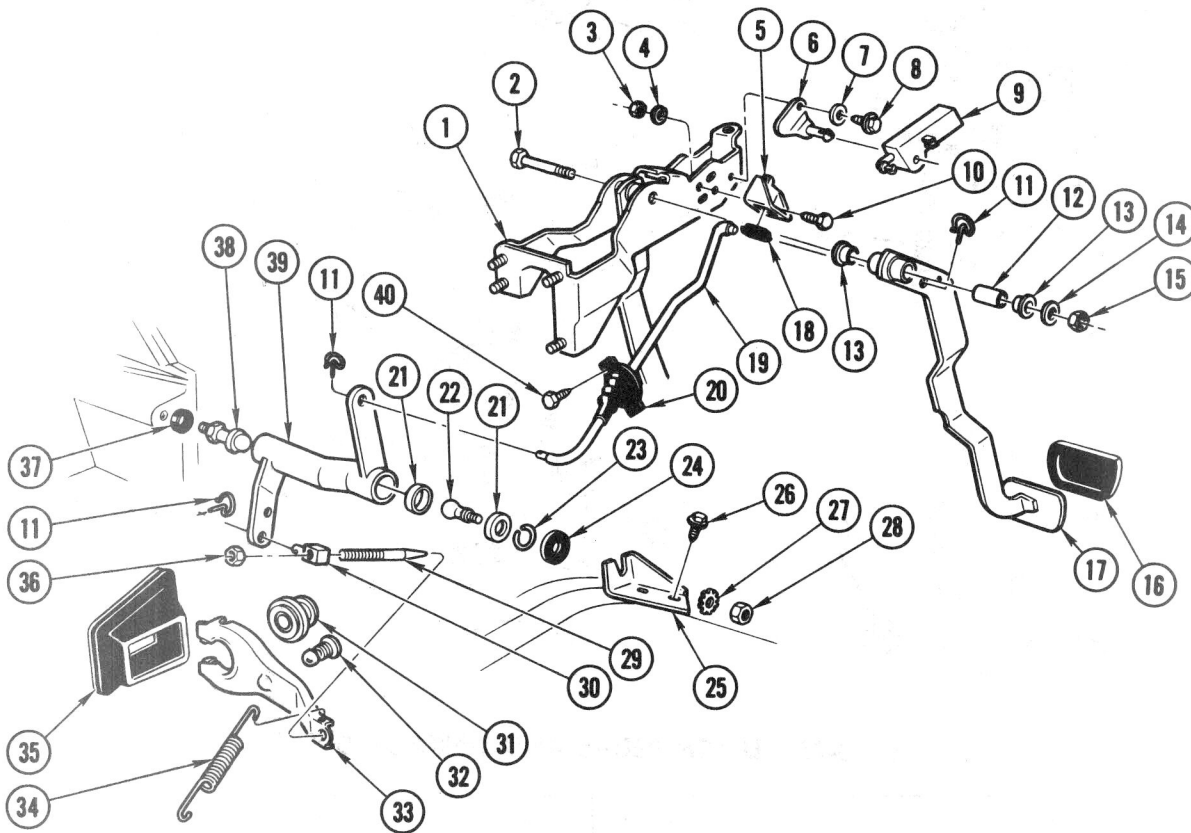
Key	Description	Group
1	Crankshaft, Engine	0.646
2	Flywheel, Engine Crankshaft	0.666
3	Bolt or Screw, Flywheel To Crankshaft	0.669
4	Plate, Clutch Driven	0.886
5	Lockwasher, Cover and Pressure Plate To Flywheel	8.931
6	Bolt, Cover and Pressure Plate To Flywheel	8.931
7	Cover and Pressure Plate, Clutch	0.859



1973-75 CLUTCH PEDAL AND LINKAGE DETAILS

Key	Description	Group
1	RETAINER, rod (hairpin type)	4.037
2	WASHER, flat	4.037
3	SEAT, equalizer ball stud	0.851
4	STUD, equalizer to frame	0.851
5	SPRING, equalizer to ball stud	0.851
6	SEAL	0.851
7	BEARING ASS.	0.799
8	BRACKET, clutch lever shaft	0.852
9	SCREW	8.977
10	WASHER, lock	8.932
11	NUT	8.915
12	LEVER & SHAFT ASS.	0.852
13	WASHER, spring (13/32)	8.928
14	SPRING, fork pull back	0.844
15	ROD, push	0.787
16	SWIVEL, clutch release	0.787
17	NUT	8.916
18	HOUSING, flywheel	0.683
19	RETAINER	4.037

Key	Description	Group
20	SCREW (8-18 x 1/2)	8.977
21	ROD, clutch pedal push	0.854
22	WASHER, clutch pedal push rod	0.854
23	BOLT (7/16 - 14 x 4 1/2)	8.900
24	NUT (5/16 x 18)	8.916
25	WASHER, lock (5/16)	8.931
26	BRACKET, clutch start switch	4.054
27	SCREW	8.977
28	BRACKET, clutch pedal bumper	0.829
29	SCREW (5/16 - 18 x 5/8)	8.977
30	SWITCH, clutch start	4.054
31	BUMPER, pedal stop	0.829
32	SPACER, pedal arm	4.634
33	BUSHING, pedal supt.	4.626
34	COVER, pedal pad clutch	0.830
35	PEDAL, clutch	0.830
36	WASHER (1/4 - .250)	8.929
37	WASHER (15/32 - 59/6 x .065)	8.929
38	NUT (7/16 x 14)	8.915



1976 CLUTCH LINKAGE

Key	Description	Group	Key	Description	Group
1	BRACKET, Brake & Clutch Pedal Mounting	4.634	21	SEAT, Ball Stud	0.851
2	BOLT, Pivot ($\frac{7}{16}$ " x $1\frac{1}{2}$ " x $4\frac{1}{2}$ "	8.900	22	STUD, Ball to Frame	0.851
3	NUT, ($\frac{3}{8}$ "-18)	8.915	23	SPRING, Stud Seat Retaining	0.851
4	LOCKWASHER ($\frac{3}{8}$ "	8.931	24	WASHER ($\frac{3}{16}$ " I.D. x $1\frac{3}{8}$ " O.D.)	0.851
5	BRACKET, Pedal Bumper	0.829	25	BRACKET, Lever Shaft	0.852
6	BRACKET, Start Switch	4.054	26	SCREW ($\frac{5}{16}$ "- $\frac{7}{8}$ "	8.977
7	WASHER ($\frac{1}{4}$ " I.D. x $\frac{1}{2}$ " O.D.)	N.S.	27	WASHER ($\frac{3}{8}$ "	8.932
8	SCREW ($\frac{1}{4}$ "-14 x $\frac{3}{4}$ "	8.977	28	NUT ($\frac{3}{8}$ "-16)	8.915
9	SWITCH, Clutch Start	4.054	29	ROD, Fork Push	0.787
10	BOLT ($\frac{3}{16}$ "-18 x $\frac{5}{8}$ "	8.900	30	SWIVEL, Push Rod	0.787
11	RETAINER, Control Rod	4.037	31	BEARING, Clutch Release	0.799
12	SPACER, Pedal Arm	4.634	32	STUD ASSEMBLY, Lever Shaft Ball to Engine	0.851
13	BUSHING, Brake & Clutch Pedal	4.626	33	FORK, Clutch Release	0.795
14	WASHER ($1\frac{1}{32}$ " I.D. x $\frac{7}{8}$ " O.D.)	8.929	34	SPRING, Clutch Return	0.844
15	NUT ($\frac{7}{16}$ "-14)	8.915	35	BOOT, Clutch Fork	0.797
16	COVER, Clutch Pedal	0.830	36	NUT ($\frac{3}{8}$ "-16)	8.915
17	PEDAL ASSY., Clutch	0.830	37	SEAL, Lever & Shaft Ball Stud	0.851
18	BUMPER, Clutch Pedal	0.829	38	STUD, Lever & Shaft Ball to Engine	0.851
19	ROD, Push	0.854	39	LEVER & SHAFT, Clutch Control	0.852
20	SEAL ASSEMBLY, Rod	0.829	40	SCREW (#8-18 x $\frac{1}{2}$ "	8.977